

OPTICAL LOSS TEST SET

FOT-600

600

NETWORK TESTING—OPTICAL



- Combines a power meter and a light source and comes with your choice of wavelengths
- Memory capacity of 1000 data items; enables data transfer to a PC via USB connection
- Ideal for network-link qualification: pass/fail LED indicator and thresholds
- Error-free testing: automatic wavelength switching, and no offset nulling required **NEW**
- Visual fault locator (VFL) option for quick and easy troubleshooting (standard)
- Low cost of ownership: three-year warranty and recommended calibration interval
- Complete reporting software **NEW**

Ideal for Network-Link Qualification

Part of EXFO's 600 handheld series, which includes the FPM-600 Power Meter and the FLS-600 Light Source, the FOT-600 Optical Loss Test Set is the ideal tool for network-link qualification. Designed for first-class ease of use, the FOT-600 features a pass/fail LED indicator; what's more, it lets you set your own thresholds for absolute or relative loss measurements.

Thanks to its memory capacity of 1000 data items and its built-in reporting software, the FOT-600 facilitates data management and enables data transfer to a PC via USB connection. Create and customize a complete test report, including certification of the link with pass/fail information.



Error-Free Test Features in a Highly Versatile Unit

When using the FOT-600 in Auto-Switching mode, the light source automatically toggles between available wavelengths. The power meter recognizes the wavelength in use and switches to the proper calibration parameter. With a press of a button, you can store results for all wavelengths at once, providing easy and error-free testing.

Thanks to its unique design, the FOT-600 Optical Loss Test Set reduces risk of error and measurement time in typical measurement situations, as the need for an offset nulling is eliminated.

In addition to network-link qualification features, the highly accurate FOT-600 offers over 40 calibrated wavelengths, including all CWDM wavelengths. What's more, it lets you measure power fluctuations with its Hold Min/Max Power function.

FTTx Ready

EXFO's FOT-600 allows for the testing of passive optical networks (PONs) at 1310 nm, 1490 nm and 1550 nm, the three wavelengths recommended by the ITU-T (G.983.3) for PONs.

Rugged and Versatile

Like all EXFO portable instruments, the FOT-600 is built for top ruggedness and versatility, perfect for the harshest test conditions. It features a keypad/LCD backlight, for easy operation in darker environments. What's more, it is powered by a rechargeable battery.

Reporting Software NEW

This new software tool enables you to produce professional-looking reports with comprehensive documentation. It also offers these functionalities:

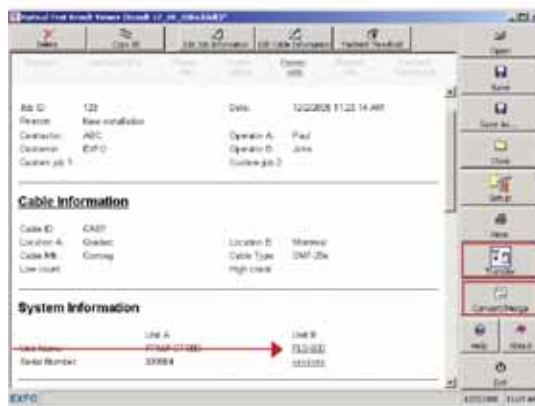
- Two test files can be merged into one test report (see note no. 3)
- Pass/fail thresholds that are active during download are automatically activated and displayed in the Report Viewer
- One-touch storage of results for all wavelengths at once (see note no. 1)
- Unit B configuration information can be input and documented (see note no. 2)
- Data transfer can be launched from the Report Viewer window (see note no. 3)
- A pass/fail threshold can be set for an individual fiber or wavelength (see note no. 4)

1
Store test results for all wavelengths at once



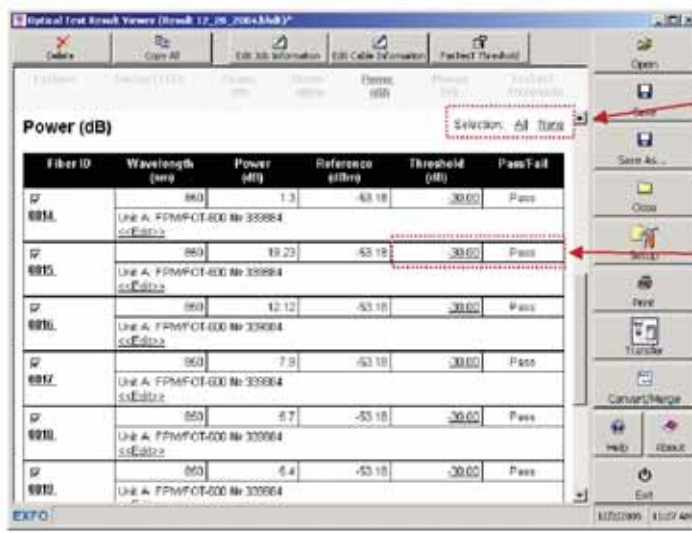
Optical Report Viewer: main window

2 Configure unit B information



3
Launch data transfer and connector merger

Optical Report Viewer: main window



Optical Report Viewer: main window

Select all or no results in a specific section

Apply a specific threshold each fiber and/or lambda and get a complete pass/fail status (not available with FasTeST results)

4

SPECIFICATIONS^a

Model	FOT-602X
Detector	GeX
Power range (dBm) ^b	26 to -55
Wavelength range (nm)	800 to 1650
Calibrated wavelengths (nm)	800, 820, 830, 840, 850, 860, 870, 880, 910, 980, 1270, 1280, 1290, 1300, 1310, 1320, 1330, 1340, 1350, 1370, 1390, 1410, 1430, 1450, 1460, 1470, 1480, 1490, 1500, 1510, 1520, 1530, 1540, 1550, 1560, 1570, 1580, 1590, 1600, 1610, 1620, 1630, 1640, 1650, 1060
Power uncertainty ^c	±5 % ± 3 nW
Resolution (dB)	±0.01 (26 dBm to -45 dBm)
Automatic offset nulling ^d	Yes
Display units	dB, dBm, W
Tone detection	270 Hz, 1 kHz and 2 kHz
Auto-switching ^e	Yes
Warm-up period (min) ^f	0
Data storage (items)	More than 1000
Battery life (hours) (typical)	72
Warranty and recommended calibration period (years)	3

Model	23BL
Central wavelength (nm)	1310 ± 20 1550 ± 20
Spectral width (nm) ^g	≤ 5
Output power (dBm)	≥ 1 ≥ 1
Power stability (dB) ^h	15 min ±0.03 8 h ±0.1
Tone generation	270 Hz, 1 kHz, 2 kHz
Automatic wavelength recognition	Yes
Battery life (hours) (typical in Auto mode)	50
Warranty and recommended calibration period (years)	3

VFLⁱ	
Emitter type	Laser
Wavelength (nm)	650
Output power (dBm)	3

- Notes**
- a. Guaranteed unless otherwise specified. All specifications valid at 23 °C ± 1 °C, with an FC connector and at 1550 nm for detector.
 - b. In CW mode; sensitivity defined as 6 x rms noise level.
 - c. For calibration wavelengths. Valid up to 20 dBm for FOT-602X.
 - d. For power > -25 dBm for FOT-602X.

- e. At 850 nm, 1300 nm, 1310 nm, 1490 nm, 1550 nm and 1625 nm; for power > -40 dBm (typical) for FOT-602X.
- f. For a variation of ≤ 0.06 dB at power levels ≥ -25 dBm for FOT-602X.
- g. rms for FP lasers.

- h. After a 15-minute warm-up period, and using an APC connector on the power meter (except for multimode sources, for which a PC connector is used). Expressed as ± half the difference between the maximum and minimum values measured during the period.
- i. Typical values in 62.5/125 μm fiber.

General Specifications

Size (H x W x D)	190 mm x 100 mm x 62 mm	(7 1/2 in x 4 in x 2 1/2 in)
Weight	0.48 kg	(1.1 lb)
Temperature	operating	-10 °C to 50 °C (14 °F to 122 °F)
	storage	-40 °C to 70 °C (-40 °F to 158 °F)
Relative humidity	0 % to 95 % non-condensing	

Standard Accessories

User guide, Certificate of Calibration, instrument stickers in six languages, AC adapter/charger, connector adapter (FOA-XX), lithium ion battery, shoulder strap, hard carrying case, USB cable, reporting software.

Safety

21 CFR 1040.10 and IEC 60825-1:1993+A1:1997+A2:2001:
 CLASS 1M LASER PRODUCT
 CLASS 3R LASER PRODUCT FOR VFL

■ If VFL option is available



ORDERING INFORMATION

FOT-60X-XX-XX-VFL

Model

FOT-602X-23BL = High-power Ge detector, 1310/1550 nm laser source 9/125 μm

Connector Adapter

- FOA-12 = Biconic
- FOA-14 = D4, D4/PC
- FOA-16 = SMA/905, SMA/906
- FOA-22 = FC (PC/SPC/UPC/APC), NEC-D3
- FOA-28 = DIN 47256 (LSA): DIN 47256 (PC/APC)
- FOA-32 = ST (PC/SPC/UPC)
- FOA-40 = Diamond HMS-OHFS-3 (3.5 mm)
- FOA-54 = SC (PC/SPC/UPC/APC)
- FOA-76 = FSMA HMS-10/AG, HFS-10/AG
- FOA-78 = Radiall EC
- FOA-84 = Diamond HMS-10, HFS-13
- FOA-96B = E-2000
- FOA-98 = LC
- FOA-99 = MU

Connector*

- EI-EUI-28 = UPC/DIN 47256
- EI-EUI-76 = UPC/HMS-10/AG
- EI-EUI-89 = UPC/FC narrow key
- EI-EUI-90 = UPC/ST
- EI-EUI-91 = UPC/SC
- EI-EUI-95 = UPC/E-2000

Visual Fault Locator

VFL = Visual fault locator
(universal 2.5 mm connector)

NOTE

- a. Singlemode only.

Example: FOT-602X-23BL-FOA-22-EI-EUI-89-VFL

* EXFO Universal Interface is protected by US patent 6,612,750.

Find out more about EXFO's extensive line of high-performance portable instruments by visiting our website at www.EXFO.com.

Rugged Handheld Solutions		Platform-Based Solutions		
OPTICAL	COPPER ACCESS	OPTICAL FIBER	DWDM Test Systems	Transport/Datacom
<ul style="list-style-type: none"> • OLTSs • Power meters • Light sources • Talk sets 	<ul style="list-style-type: none"> • ADSL/ADSL2+, SHDSL, VDSL test sets • VoIP and IPTV test sets • Ethernet test sets • POTS test sets 	<ul style="list-style-type: none"> • OTDRs • OLTSs • ORL meters • Variable attenuators 	<ul style="list-style-type: none"> • OSAs • PMD analyzers • Chromatic dispersion analyzer 	<ul style="list-style-type: none"> • SONET/DSn (DS0 to OC-192) testers • SDH/PDH (64 kb/s to STM-64) testers • T1/T3 testers • E1 testers • 10/100 and Gigabit Ethernet testers • Fibre Channel testers • 10 Gigabit Ethernet testers

EXFO Corporate Headquarters > 400 Godin Avenue, Quebec City (Quebec) G1M 2K2 CANADA | Tel.: 1 418 683-0211 | Fax: 1 418 683-2170 | info@EXFO.com

Toll-free: 1 800 663-3936 (USA and Canada) | www.EXFO.com

Region	Address	City	Country	Tel.	Fax
EXFO America	3701 Plano Parkway, Suite 160	Plano, TX	USA	Tel.: 1 800 663-3936	Fax: 1 972 836-0164
EXFO Europe	Omega Enterprise Park, Electron Way	Chandlers Ford, Hampshire	S053 4SE ENGLAND	Tel.: +44 2380 246810	Fax: +44 2380 246801
EXFO Asia	151 Chin Swee Road, #03-29 Manhattan House	SINGAPORE	169876	Tel.: +65 6333 8241	Fax: +65 6333 8242
EXFO China	No.88 Fuhua First Road Central Tower, Room 801, Futian District	Shenzhen	518048 CHINA	Tel.: +86 (755) 8203 2300	Fax: +86 (755) 8203 2306
	Beijing New Century Hotel Office Tower, Room 1754-1755 No. 6 Southern Capital Gym Road	Beijing	100044 P. R. CHINA	Tel.: +86 (10) 6849 2738	Fax: +86 (10) 6849 2662

EXFO is certified ISO 9001 and attests to the quality of these products. This device complies with Part 15 of the FCC Rules. Operation is subject to the following two conditions: (1) this device may not cause harmful interference, and (2) this device must accept any interference received, including interference that may cause undesired operation. EXFO has made every effort to ensure that the information contained in this specification sheet is accurate. All of EXFO's manufactured products are compliant with the European Union's WEEE directive. For more information, please visit www.EXFO.com/recycle. However, we accept no responsibility for any errors or omissions, and we reserve the right to modify design, characteristics and products at any time without obligation. Units of measurement in this document conform to SI standards and practices. **Contact EXFO for prices and availability or to obtain the phone number of your local EXFO distributor.** For the most recent version of this spec sheet, please go to the EXFO website at <http://www.EXFO.com/specs>. In case of discrepancy, the Web version takes precedence over any printed literature.

