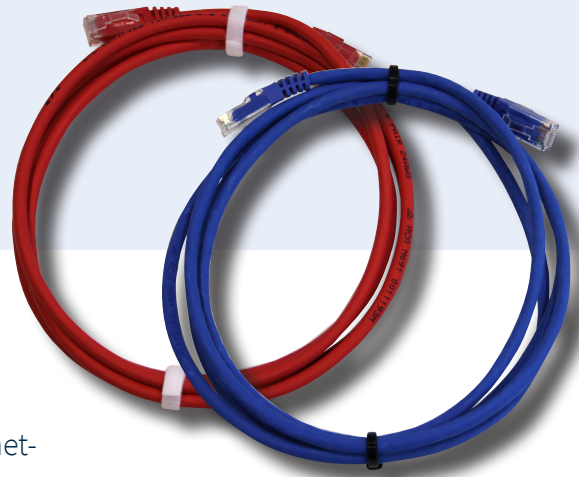


Copper Network Patch Leads (CAT5e, 6, 6A)



FOS offers a range of high quality and cost effective copper network patch leads. Available in TIA 568 Cat 5e, 6 & 6a in a range of standard lengths and colours, in addition to custom made to order lengths and colour combinations to satisfy all of your network patching requirements.

Applications

- Defence networks
- Communications closet or cabinet patching
- Terminal patching
- Temporary communication links

Features & Benefits

- Complies with all TIA 568.C.2 Category 5e, 6 or 6A requirements
- Low smoke zero halogen jacket allows for deployment in controlled data centre environments
- Guaranteed performance and quality
- Range of jacket and boot colours for network designation & well suited to defence requirements
- Snagless boots with integrated strain relief offer protection to patch leads during handling and patching
- S/FTP Category 6A patch leads suitable for high bandwidth environments susceptible to radio or electromagnetic interference
- Wide operating temperature suits a range of environments



Active | Passive | Test Equipment | Tooling | Cable | Fibre Management

For further information:
www.fibreoptic.com.au
+61 3 9757 3000

Technical Specifications

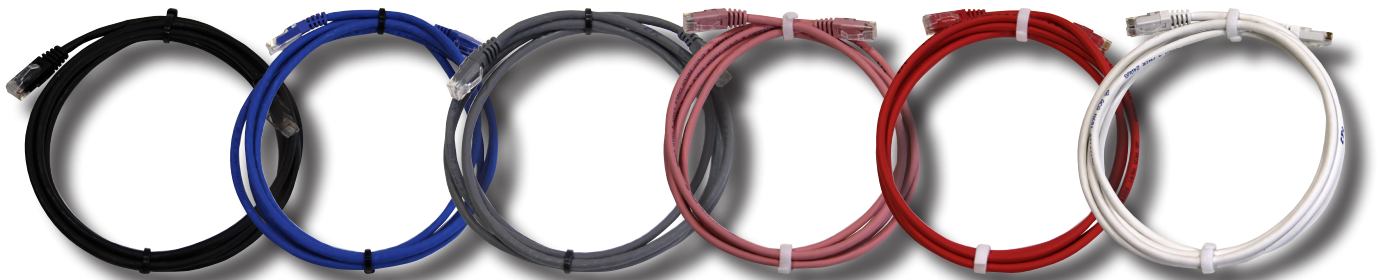
Patch Lead Category	TIA 568 Category 5e	TIA 568 Category 6	TIA 568 Category 6A
Jacket Material	LSZH	LSZH	LSZH
Cable Construction	U/UTP	U/UTP	S/FTP
Operating Frequency	100 MHz	250 MHz	500 MHz
Operating Temperature	-25 ~ 60 °C	-25 ~ 60 °C	-25 ~ 60 °C
Installation Temperature	-10 ~ 50 °C	-10 ~ 50 °C	-10 ~ 50 °C
Storage Temperature	-25 ~ 60 °C	-25 ~ 60 °C	-25 ~ 60 °C
Standards Compliance	<ul style="list-style-type: none"> - ISO/IEC11801:2011(Ed. 2.2) - ANSI/TIA/EIA-568-C.2 - EN 50173-1:2011 - EN 50173-2:2007 including amendment A1:2010 - IEC61935-2:2010(Ed.3.0) (transmission requirements) - RoHS Compliant 		

Ordering Information

CAT6 - 20 BU (-WH)

Category	Length (m)	Jacket Colour	Boot Colour
CAT5e: Category 5e		BU: Blue	BU: Blue
CAT6: Category 6		GY: Grey	GY: Grey
CAT6A: Category 6A		RD: Red	RD: Red
		PK: Pink	PK: Pink
		GN: Green	GN: Green
		BK: Black	BK: Black
		YL: Yellow	YL: Yellow
		PU: Purple	PU: Purple

Notes: Leave boot colour code blank for standard colour boots.
Standard boots only for all CAT6A leads.
Not all colours may be available in CAT6A leads.



Active | Passive | Test Equipment | Tooling | Cable | Fibre Management

For further information:
www.fibreoptic.com.au
 +61 3 9757 3000

Page 2 of 2

FOS
Fibre Optic Systems