

CoreLink *EHD* MTP® Enclosure System



The CoreLink *EHD* Enhanced High Density MTP® Cabling system is a complete plug and play solution for fibre networks. Offering end to end connectivity in industry leading density and functionality.

FOS offers the range of CoreLink *EHD* compatible enclosures and cassettes in 144 fibre and 96 fibre per 1RU configurations. Combined with the full range of FOS MTP® cable options including flat and angle polish, OM1, OM3, OM4 & SM, single or double jacket, high fibre trunking and fanout assemblies, the CoreLink *EHD* cabling system offers an excellent solution for a wide range of networking requirements.

Applications

- Data centre networks
- SAN, LAN and WAN networks
- Enterprise plug and play connectivity
- High fibre compact trunking
- Telecommunications exchange fibre networks
- Fibre to the antenna
- Cross connects & distribution frames

CoreLink *EHD*

Features & Benefits

- Industry leading 144 fibre or 96 fibre 1RU enclosure options
- All CoreLink *EHD* enclosures, cassettes and cabling are compatible and require no management of specific cassette styles to match enclosure
- MTP® cassettes offer port labeling and mode identification in a compact 12 fibre package
- Excellent scalability, fill capacity 12 fibres at a time as required
- All CoreLink *EHD* cassettes, fan-outs and trunks utilise US Conec brand MTP® connectors and adapters
- Individual sliding trays for each row of cassettes offers excellent finger access and minimises disturbance of neighbouring circuits
- Fibre management of incoming trunks and outgoing patchleads
- In-built hinged patch lead protective cover and labelling template

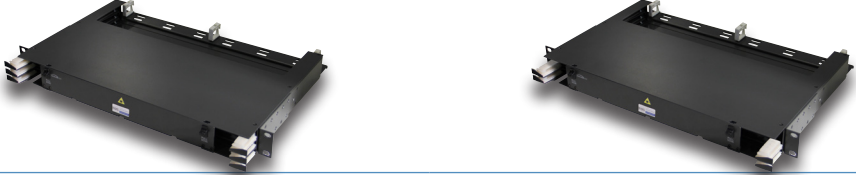


MTP is a registered trademark of US Conec

Active | Passive | Test Equipment | Tooling | Cable | Fibre Management

For further information:
www.fibreoptic.com.au
+61 3 9757 3000

Technical Specifications (Enclosures)

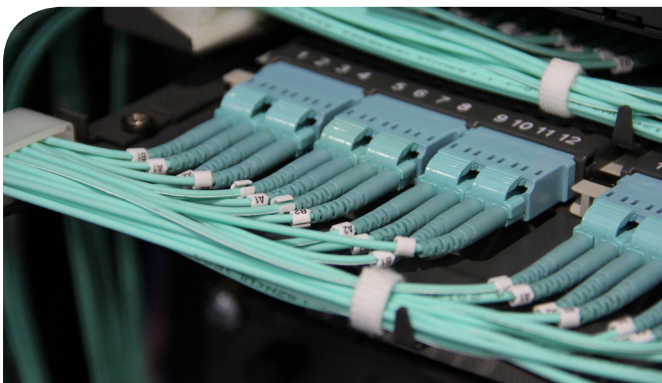
Part Number	FOS-1RU-EHD- S	FOS-1RU-EHD- S8
Description	CoreLink EHD 1RU 12 Port Sliding Enclosure - 144f Capacity	CoreLink EHD 1RU 8 Port Sliding Enclosure - 96f Capacity
Size WxHxD (mm)	485 x 44 x 350	485 x 88 x 350
Weight unit (kg)	4.2	3.8
Cassette/panel capacity	12 EHD Cassettes or Adapter Panels 3 individual sliding trays supporting 4 cassettes each	8 EHD Cassettes or Adapter Panels 2 individual sliding trays supporting 4 cassettes each
Port capacity (fibre count)	144 fibre LCQ, 576 fibre MTP®12, 1152 fibre MTP®24	96 fibre LCQ, 384 fibre MTP®12, 768 fibre MTP®24
Cable entry bracket	Included cable management tie down bar - detachable	Included cable management tie down bar - detachable
Material and colour	Charcoal grey powdercoated - Rugged 1.2, 1.6 & 2.0mm steel and aluminium construction	
Standard unloaded enclosure		
Standard accessories	Each rack mount enclosure comes packaged with: 4 Cage nuts, screws and washers, velcro length, 4 cable ties, cable tie down bar & fibre management clips	



Integrated hinged cover offers patch lead protection, eye protection and labelling template all with a simple latching operation



Individual sliding trays for each row of cassettes allow for simple patching, cassette insertion and removal and unparallelled finger access



Clear port labelling, excellent fibre routing, excellent finger access and simple patch lead retention without the need for specialised patch leads




Easily accessible MTP connectors and convenient rear management tray - perfectly suited to both two post racks and server cabinets

Active | Passive | Test Equipment | Tooling | Cable | Fibre Management

For further information:
www.fibreoptic.com.au
 +61 3 9757 3000

Technical Specifications (Cassettes)

Featuring a simple slide in retention feature and compact size, all CoreLink EHD cassettes are cross compatible with all CoreLink EHD enclosures. Available in multimode and singlemode, each cassette is clearly labelled with the wiring method and mode, in addition colour coded adapters offer excellent mode visibility. Compact and easy to handle, allowing for a cost effective scaling of density as required.

CoreLink EHD 12 Fibre MTP to LC Cassettes				
Part Number	EHD-12MTPMLCQ-M1(x)	EHD-12MTPMLCQ-M3(x)	EHD-12MTPMLCQ-M4(x)	EHD-12MTPMLCQ-S(x)
Description	CoreLink EHD MTP® Cas- sette: 12F Male MTP to LCQ, OM1 - Method A, B or C	CoreLink EHD MTP® Cas- sette: 12F Male MTP to LCQ, OM3 - Method A, B or C	CoreLink EHD MTP® Cas- sette: 12F Male MTP to LCQ, OM4 - Method A, B or C	CoreLink EHD MTP® Cas- sette: 12F Male MTP to LCQ, SM - Method A, B or C
Size WxHxD (mm)	95 x 12 x 145	95 x 12 x 145	95 x 12 x 145	95 x 12 x 145
Weight unit (kg)	0.1	0.1	0.1	0.1
Standard Cassette				



Active | Passive | Test Equipment | Tooling | Cable | Fibre Management

For further information:
www.fibreoptic.com.au
 +61 3 9757 3000