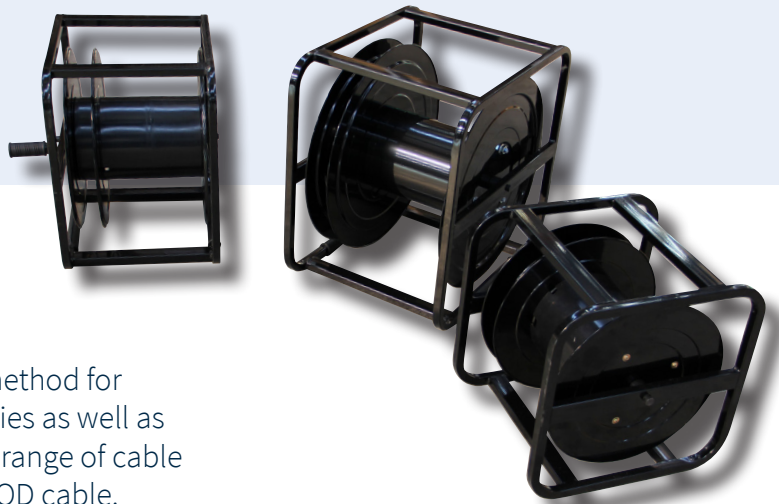


Field Deployable Reels



Field deployable cable reels offer a convenient method for roll-out and retrieval of fibre optic cable assemblies as well as a range of communications cabling. FOS offers a range of cable reels in sizes to suit 300, 500 and 1000m of 6mm OD cable.

Hand wound reels offer a simple deployment and retrieval method that allows for patching of cable assemblies without the need to fully unwind the reel. These reels are well suited to the FOS range of harsh environment cable assemblies including: expanded beam, multi channel physical contact and broadcast connectivity.


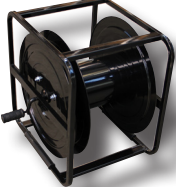

Applications

- Broadcast and television networks
- Defence deployable communications
- Mine site and harsh environment cabling
- Deployable connectivity

Features & Benefits

- Rugged steel design offers longevity in even the harshest environments
- Full frame construction limits possible damage to cable
- Ergonomic handle offers convenient winding
- Range of available sizes suitable for various cable constructions and lengths
- 3 flange design offers simple access to both ends of the cable during deployment and retrieval
- Suitable for up to 300, 500 & 1000m of 6mm diameter cable

Technical Specifications

Part Number	Cable Capacity (m @ 6mm OD)	Dimensions (mm) W x H x D	Weight (kg) unloaded	Reference Image
REEL-1000-MBK	1000	590 x 590 x 480	16.3	
REEL-500-MBK	500	520 x 520 x 410	12.8	
REEL-300-MBK	300	450 x 450 x 410	10.1	

Active | Passive | Test Equipment | Tooling | Cable | Fibre Management

For further information:
www.fibreoptic.com.au
 +61 3 9757 3000

Page 2 of 2