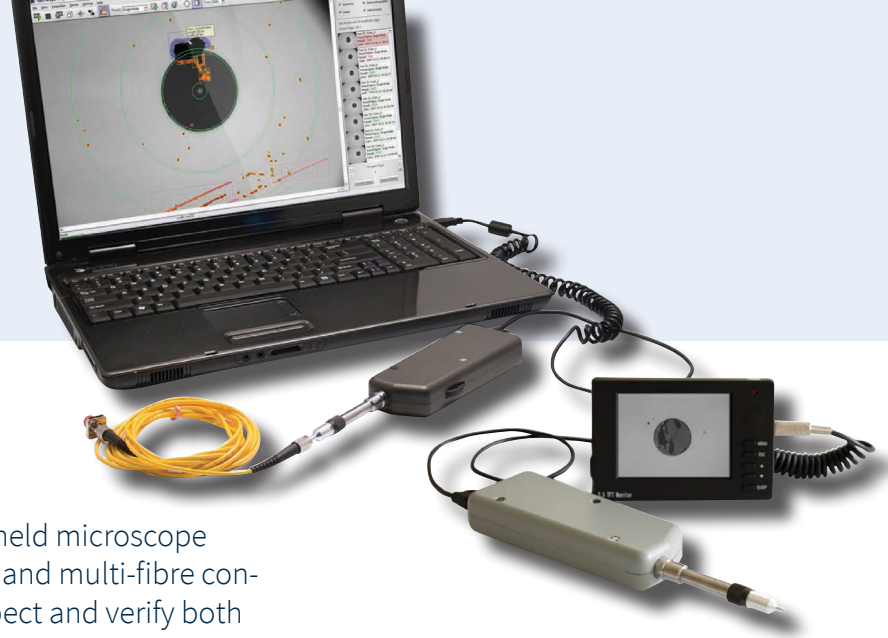


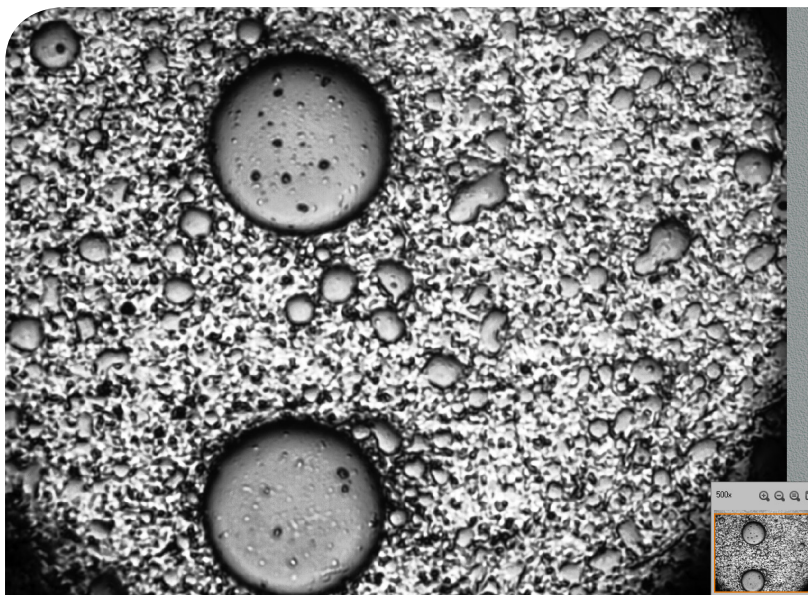
## Sumix Inspection Probes



Sumix designs and manufactures handheld microscope probes for end face inspection of single and multi-fibre connectors. The probes can be used to inspect and verify both exposed connector ferrules and also through bulkhead or adapters. Suitable for both PC and APC connector types with both digital and analogue versions available.

### Applications

- Inspection of connectorised fibre patch leads and assemblies
- Allows for the inspection of all terminations before making any connections in your fibre optic network
- Suitable for all network types including industrial, telecommunications, military, broadcast and infrastructure



### Features & Benefits

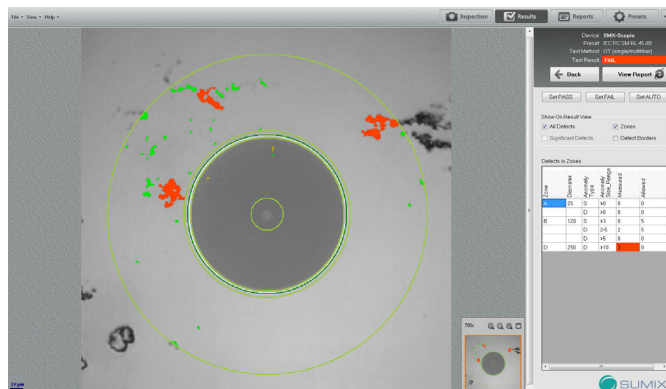
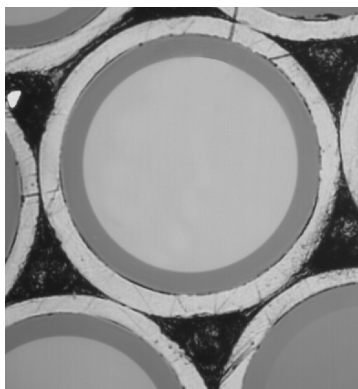
- Purpose built high-quality optics allow defects as small as  $1\mu\text{m}$  to be seen
- Wide field of view enables inspection of connectors with large fibres or fibre bundles
- Long barrel and flat housing allow easy inspection of connectors in dense patch panels and hard to reach equipment
- Easy to use, finger friendly focusing system allows for more efficient inspection in less time
- One button inspection operation allows for trouble free testing
- Robust aluminium body and stainless steel barrel ensure long service life
- Wide variety of probe tips for single and multi-fibre connectors in both genders of PC and APC terminations
- SMX-Inspection software eliminates user subjectivity by providing automated pass/fail criteria based on IEC and TIA standards (available for digital probes only)

Active | Passive | Test Equipment | Tooling | Cable | Fibre Management

For further information:  
[www.fibreoptic.com.au](http://www.fibreoptic.com.au)  
+61 3 9757 3000

# Technical Specifications

Part Number	SMX-SCOPIO	SMX-SCOPIO-B	SMX-SCOPIO-A
Field of View (Ø mm)	0.4	0.4	0.4
Defect Size Detection (µm)	0.5	0.5	1.0
Optical Resolution (µm)	2	2	2
Magnification	600x (variable)	600x (variable)	200x
Light Source	blue LED, 470nm	blue LED, 470nm	blue LED, 470nm
Camera Type	digital	digital	analogue
Sensor Type	monochrome, 1280 × 1024, 1/2" CMOS	monochrome, 1280 × 1024, 1/2" CMOS	monochrome, 1/3" Sony CCD
Live Image	800 × 800, 28 fps default 1280 × 1024, 14 fps full res.	800 × 800, 28 fps default 1280 × 1024, 14 fps full res.	320 × 240 full resolution
Test Button	No	Yes	No
Power Source	USB 2.0 Port of PC	USB 2.0 Port of PC	internal battery of 3.5" TFT display
Cable Connector	USB 2.0	USB 2.0	3.5 mm
Dimensions HxWxD (mm)	56.3 × 25 × 201	56.3 × 25 × 201	56.3 × 25 × 201
Weight (g)	330	330	330
Housing Material	Aluminium	Aluminium	Aluminium
Barrel Material	Stainless Steel	Stainless Steel	Stainless Steel
Connection Option	Desktop PC, Laptop	Desktop PC, Laptop	3.5" TFT display



Zone	Inner	Outer	Type	Criterion	Min Range	Result	Count	Allowed
A	25	SCAP	Defect	Encroaching Core Diameter	-25	PASS	0	0
							0	0
B	100	SCAP	Defect	Encroaching Core Diameter	-25	PASS	2	5
							2	5
C	200	SCAP	Defect	Encroaching Core Diameter	-25	PASS	0	0
							0	0
D	200	SCAP	Defect	Encroaching Core Diameter	-25	FAIL	2	0
							2	0

Active | Passive | Test Equipment | Tooling | Cable | Fibre Management

For further information:  
[www.fibreoptic.com.au](http://www.fibreoptic.com.au)  
 +61 3 9757 3000

