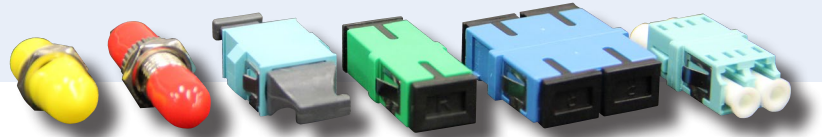


Fibre Optic Through Adapters



FOS offers a large range of reliable and high quality fibre optic through adapters. Through adapters provide a fast and efficient way to make temporary or permanent network links between connectorised cable.

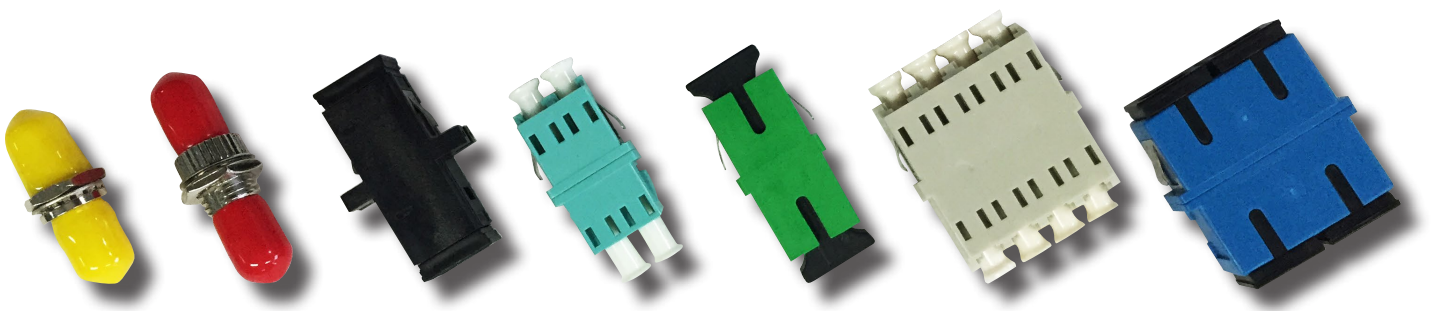
Available to suit a large range of common, legacy and specialty fibre connectors and in a range of colours and mounting configurations. FOS through adapters provide a reliable, high performance link between connector mates in your fibre optic network.

Applications

- Ethernet, Fiber channel, ATM and WAN
- Telecommunications networks
- Local area networks
- Data processing networks
- Cable television
- Premises distribution

Features & Benefits

- High precision alignment sleeves and adapter bodies provide a reliable mate between connector ferrules
- Variety of adapter and boot colours for network identification
- All FOS adapters comply with geometry requirements outlined in TIA 604 and IEC 61754 standards
- All adapters are stored and supplied with dust caps to prevent connector contamination
- Different mounting footprints and flange styles available for many adapter types
- A large range of hybrid and legacy adapters held in stock
- RoHS, REACH SvHC compliant

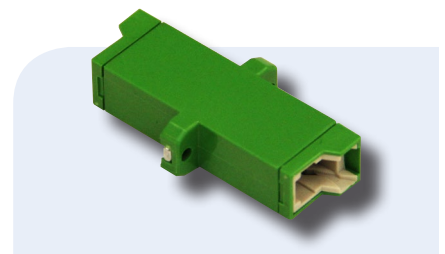
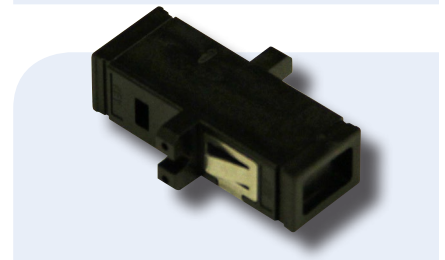
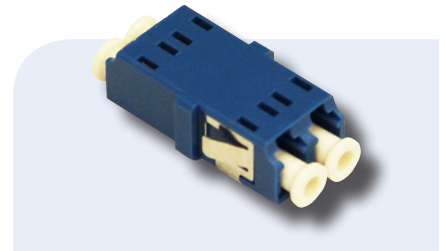


Active | Passive | Test Equipment | Tooling | Cable | Fibre Management

For further information:
www.fibreoptic.com.au
+61 3 9757 3000

Technical Specifications

SC Adapter	Performance		Conformance
	Ceramic	Bronze	
Typical Insertion Loss (dB)	0.1	0.15	IEC 61300-3-4
Mating Durability (cycles)	500		IEC 61300-2-2
Retention Force (N)	2 - 5.9		IEC 61754-4
Operating Temperature (°C)	-25 to +70 (12 Cycles)		IEC 61300-2-22
LC Adapter	Performance		Conformance
	Ceramic		
Typical Insertion Loss (dB)	0.1		IEC 61300-3-4
Mating Durability (cycles)	500		IEC 61300-2-2
Retention Force (N)	1 - 2.5		IEC 61754-20
Operating Temperature (°C)	-25 to +70 (12 Cycles)		IEC 61300-2-22
ST Adapter	Performance		Conformance
	Ceramic	Bronze	
Typical Insertion Loss (dB)	0.1	0.15	IEC 61300-3-4
Mating Durability (cycles)	500		IEC 61300-2-2
Retention Force (N)	1 - 2.5		IEC 61754-20
Operating Temperature (°C)	-25 to +70 (12 Cycles)		IEC 61300-2-22
FC Adapter	Performance		Conformance
	Ceramic	Bronze	
Typical Insertion Loss (dB)	0.1	0.15	IEC 61300-3-4
Mating Durability (cycles)	500		IEC 61300-2-2
Retention Force (N)	2 - 5.9		IEC 61754-13
Operating Temperature (°C)	-25 to +70 (12 Cycles)		IEC 61300-2-22
MTRJ Adapter	Performance		Conformance
	Polymer		
Typical Insertion Loss (dB)	0.2		IEC 61300-3-4
Mating Durability (cycles)	500		IEC 61300-2-2
Retention Force (N)	2 - 5.9		IEC 61754-13
Operating Temperature (°C)	-25 to +70 (12 Cycles)		IEC 61300-2-22
E2000 Adapter	Performance		Conformance
	Ceramic	Bronze	
Typical Insertion Loss (dB)	0.1	0.15	IEC 61300-3-4
Mating Durability (cycles)	500		IEC 61300-2-2
Retention Force (N)	2 - 5.9		IEC 61754-20
Operating Temperature (°C)	-25 to +70 (12 Cycles)		IEC 61300-2-22



Ordering Information

TA - SC RF - GN (-S)

Through Adapter	Adapter Style	Mounting Configuration	Housing/Dustcap Colour	Shutter
	SC: SC Simplex	RF: Reduced Flange	GN: Green	S: Shuttered
	SCD: SC Duplex	SF: 2 Hole Flange	BU: Blue	Note: Leave Blank if no shutter required
	LC: LC Simplex	DD: Double D Jamnut	AQ: Aqua	
	LCD: LC Duplex	SQ: Square Flange	BE: Beige	
	LCQ: LC Quad	RJ: RJ45 Mount	BK: Black	
	ST: ST Simplex		RD: Red	
	STD: ST Duplex		YL: Yellow	
	E2K: E2000		VT: Violet	
	FC			
	MTP			
	MTRJ			
	MU			
	FDDI			

Hybrid Adapters

Please contact FOS to discuss your hybrid adapter requirements