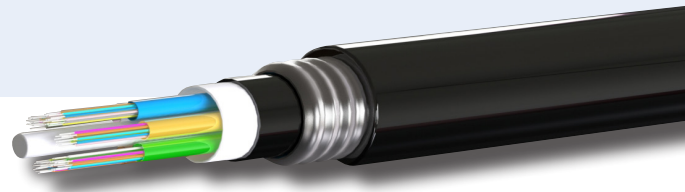


# CST Armoured Loose Tube Cable 6-144f



FOS corrugated steel tape armoured loose tube fibre cable is suited to external underground installations in ducts by pulling, jetting or floating techniques or by direct burial in open-cut trenches. CST armoured loose tube is particularly suited to areas where rodents and termites are an issue and metallic construction is permitted.

Loose tube cable offers a cost-effective and rugged solution for medium and long distance external fibre runs.

FOS corrugated steel tape armoured loose tube cable is available in OM1, OM3, OM4 and Singlemode.\*

## Applications

- Underground ducts
- Direct buried fibre links
- Inter-building links
- Infrastructure and industrial fibre links
- Rodent/termite prone areas

## Features & Benefits

- Double jacketed, armoured loose tube
- Insect/termite & rodent proof steel tape and UV stabilised polyethelene jackets suits permanent installation in a wide range of environments
- Water swellable yarns provide protection against water ingress (dry core construction)
- Metallic armoring offers superior protection to a range of hazards
- Fibreglass reinforced polymer central strength member provides excellent anchor point
- Flexible buffer tubes provide easy handling within termination enclosures
- Single layer SZ stranding limits stress on fibre tubes under tensile loads
- Fibre friendly thixotropic gel in tubes ensures fibre protection
- TIA 598 standard colour code
- 6-144 fibres

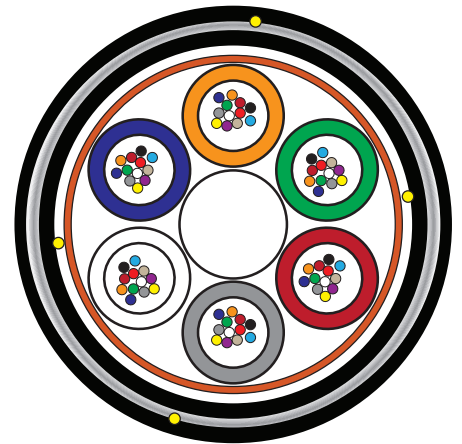
\*G652.D Standard, G655, G656, G657 available

Active | Passive | Test Equipment | Tooling | Cable | Fibre Management

For further information:  
[www.fibreoptic.com.au](http://www.fibreoptic.com.au)  
+61 3 9757 3000

## Fibre Performance

Fibre type	OM1	OM3	OM4	OS1/2 (G652.D)
Attenuation at 850nm (db/km)	≤3.1	≤3.0	≤3.0	n/a
Attenuation at 1300/1310nm (db/km)	≤1.0	≤1.0	≤1.0	≤0.35
Attenuation at 1550nm (db/km)	n/a	n/a	n/a	≤0.21
Attenuation at 1625nm (db/km)	n/a	n/a	n/a	<0.24
Bandwidth at 850nm [1300nm] (MHz.km)	≥200 [≥500]	≥1500 [≥500]	≥3500 [≥500]	n/a



## Technical Specifications

Temperature Range (°C)	Operating: -30 to +70 Storage: -30 to +70 Install: -20 to +70	(IEC 60794-1-2-F1)
Cable bend radius	Install: 20 x cable diameter Operation: 20 x cable diameter	(IEC 60794-1-2-E11A)
Repeated bending	30 cycles: radius 20 X cable diameter, 10 Kg Load	(IEC 60794-1-2-E6)
Max tensile force (N)	Install: 2500 Operation: 2500	(IEC 60794-1-2-E1)
Torsion resistance	10 Cycles (± 360°) 10 Kg weight, 2m length	(IEC 60794-1-2-E7)
Crush resistance (N/100mm)	4000	(IEC 60794-1-2-E3)
Impact resistance	500mm height, 5kg weight, 3 impacts	(IEC 60794-1-2-E4)
Kink resistance	10 x cable diameter	(IEC 60794-1-2-E10)
Water penetration	1m head, 3m cable, 24 hours	(IEC 60794-1-2-F5B)

Change in attenuation after testing shall be <0.1dB

## Cable Characteristics

Fibre Count	6 - 72	96	144
Nominal diameter (mm)	13.5	15.0	17.5
Nominal weight (kg/km)	170	205	270
Minimum bend radius installation (cm)	27.0	30.0	35.0
Min. bend radius long term (cm)	27.0	30.0	35.0

Active | Passive | Test Equipment | Tooling | Cable | Fibre Management

For further information:  
[www.fibreoptic.com.au](http://www.fibreoptic.com.au)  
 +61 3 9757 3000

Page 2 of 2

**FOS**  
 Fibre Optic Systems