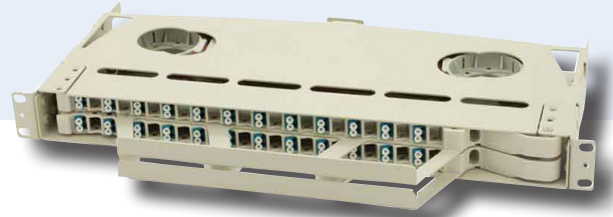


# 1RU Pivoting Enclosure - 48 Port

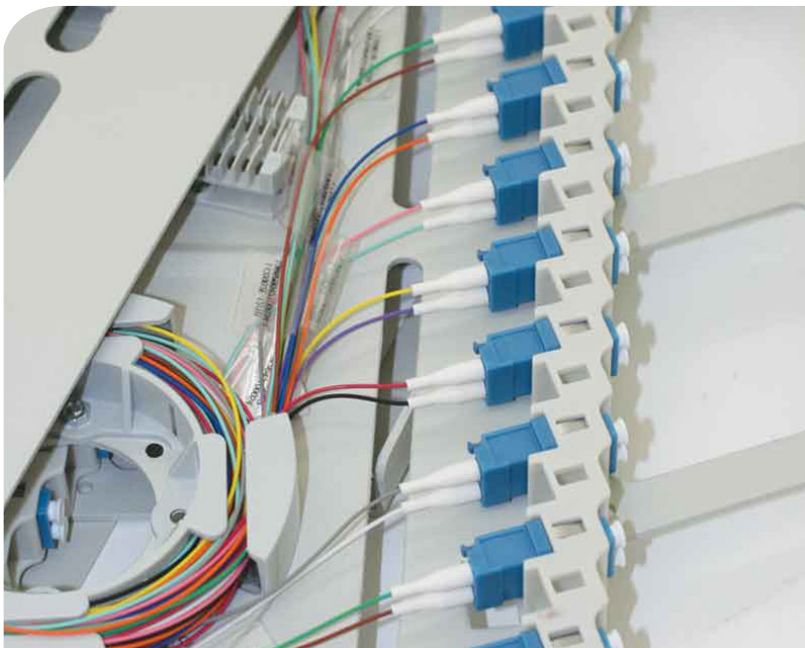


This innovative, functional and robust 1RU pivoting enclosure has been designed to accept 48 through adapters in 1RU for a maximum capacity of 96 fibres. Multiple adapter mounting options tailor for a range of connector types enabling incorporation into a range of networks.

The ability to gain full access to the enclosure internals during installation and maintenance without disturbance to in rack fibres offers a very flexible solution to the end user.

## Applications

- Data centers, premise installations, telecommunication networks
- Ethernet, Fibre Channel, ATM, LAN, MAN and WAN
- Data communication and telecommunication networks
- Indoor applications



## Features & Benefits

- 48 SC Simplex or LC Duplex connections
- Angled adaptors allow for bend radius management of patch leads
- Fully integrated fibre management
- 1U overall with ½ U individual trays
- Patch cord exit retrofit cable management available.
- 30mm bend radius maintained throughout.
- Single layer interleaved splicing area
- Individually labelled ports
- ROHS, REACH SvHC
- Fits standard 19" rack with adjustable positioning
- Individual cable tie and strength member tie points in each tray
- Individual 20mm gland entry point for each tray
- Cable entry from both sides dependant upon direction of pivot

Active | Passive | Test Equipment | Tooling | Cable | Fibre Management

For further information:  
[www.fibreoptic.com.au](http://www.fibreoptic.com.au)  
+61 3 9757 3000

## Technical Specifications

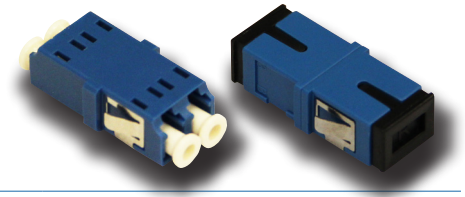
Part Number	FOS-1RU-48P-FP
Description	1RU 48 Port Pivoting Enclosure
Dimensions WxHxD (mm)	482 x 44.4 x 282.5
Weight (kg)	3.0
Port Capacity (max)	48 SC & LCD
Material & Colour	Light Grey Powdercoated 1.5mm Steel
Applicable standards	TIA/EIA 568 C, ISO/IEC 11801, EN50173, IEC60304, IEC61754, EN297-1

## Optional Enclosure Accessories

Part Number	Description
-------------	-------------

FOS carries a range of cable termination consumables and accessories including:

- æ Through adapters
- æ Pigtails
- æ Splicing consumables
- æ Glands and cable management accessories



Active | Passive | Test Equipment | Tooling | Cable | Fibre Management

For further information:  
[www.fibreoptic.com.au](http://www.fibreoptic.com.au)  
 +61 3 9757 3000

Page 2 of 2

**FOS**  
 Fibre Optic Systems