

## CoreLink Plus Fixed Entry Sliding Enclosures



**CoreLink** Plus

FOS is proud to offer the CoreLink range of fibre optic termination enclosures - all proudly Australian designed and assembled. The CoreLink Fixed Entry Sliding Enclosures utilise a unique cable entry tie down bracket and conduit transport system. This helps to eliminate cable movement in rack, while still offering excellent access to the tray for splicing, termination and re-entry.

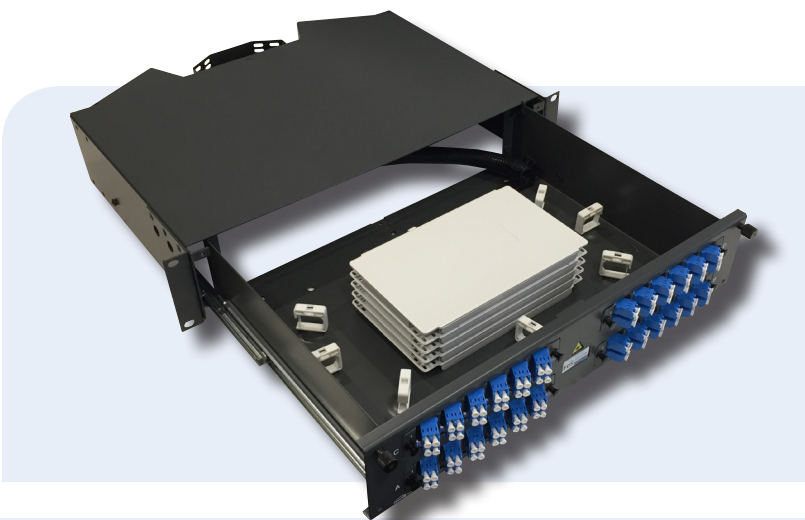
These enclosures are available in 1, 2 or 3RU sizes in a host of configurations and connector variants. A broad range of adapter plates in both flat and angled, versatile cassette mounting and excellent cable management internally & for entering cables, all combine to offer a tailored solution for your needs.

### Applications

- Splicing of tight buffered or loose-tube cable
- Direct termination of fibre optic cable including quick connects or epoxy field termination
- Telecommunications networks - particularly exchange or data centre applications
- Unique design is suitable for rodent prone areas

### Features & Benefits

- Rugged powdercoated aluminium and steel construction ensures product durability
- Unique cable entry bracket eliminates in rack cable movement and offers flexible mounting options
- Screenprinted panels and enclosure fascia offer excellent port labelling & identification
- Range of panel and faceplate options to suit a broad variety of fibre types and adapter styles
- Double sliding rails and convenient draw latching system ensure excellent internal access is available and maintained while terminating
- Cable entry can be configured for either side with minimal fuss due to unique entry bracket
- Adjustable mounting ears allow for a variety of rack mount options
- Innovative tray latch keeps drawer open during use
- S009:2013 compliant laser warning badge on all enclosures






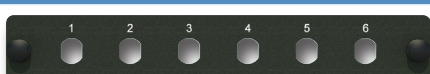



Active | Passive | Test Equipment | Tooling | Cable | Fibre Management

For further information:  
[www.fibreoptic.com.au](http://www.fibreoptic.com.au)  
+61 3 9757 3000

## Technical Specifications

Part Number	FOS-1RU-2P-FES	FOS-2RU-4P-FES	FOS-3RU-8P-FES
Description	CoreLink Plus 1RU 2 Panel Fixed Entry Sliding Enclosure	CoreLink Plus 2RU 4 Panel Fixed Entry Sliding Enclosure	CoreLink Plus 3RU 8 Panel Fixed Entry Sliding Enclosure
Size WxHxD (mm)	485 x 44 x 350	485 x 88 x 350	485 x 132 x 350
Weight unit (kg)	3.75	4.2	5.75
Adapter panel capacity	2 Flat or Angled	4 Flat or Angled	8 Flat or Angled
Port capacity (fibre count)	24 SC,SCD, ST, FC / 48 LCD, LCQ	48 SC,SCD, ST, FC / 96 LCD, LCQ	96 SC,SCD, ST, FC / 192 LCD, LCQ
Splice capacity (double stacked)	24 (48 HD)	48 (96 HD)	96 (192 HD)
High density faceplate options	48 Port SC Flat Faceplate	96 Port SC Flat Faceplate	144 Port SC Angled Faceplate
Cable entry ports	2 x 20mm (max 1 usable concurrently)	4 x 20mm (max 2 usable concurrently)	6 x 20mm (max 3 usable concurrently)
Material and colour	Charcoal grey powdercoated - Rugged 1.2, 1.6 & 2.0mm steel and aluminium construction		
Standard unloaded enclosure			
Standard accessories	Each rack mount enclosure comes packaged with: Conduit cable transport system, 4 Cage nuts, screws and washers, 1 nylon cable entry gland, velcro length, 4 cable ties, cable strength member anchor, laser bubble badge & fibre management clips		
Optional accessories	All FOS rackmount enclosures can be purchased as an assembled fully loaded enclosure with the following inclusions: Patch plates, splice cassettes, splice protectors, through adapters & pigtailed. See optional accessories chart for further details on available accessories. Contact FOS for a quote on any loaded enclosure enquiries.		

## CoreLink Plus Adapter Panels

Part Number	Description	
<b>Blank Panels</b>		
FPP-BLANK	Blank Panel	
<b>SC / LCD / MTRJ Panels</b>		
FPP-SC06-FL	6 Port SC/LCD flat panel - printed 1-6 (7-12 on rear)	
FPP-SC12-FL	12 Port SC/LCD flat panel - printed 1, 12 (13, 24 on rear)	
FPP-SC06-AL	6 Port SC/LCD angled left panel - printed 1, 6	
FPP-SC06-AR	6 Port SC/LCD angled right panel - printed 1, 6	
FPP-SC12-AL	12 Port SC/LCD angled left panel - printed 1, 12	
FPP-SC12-AR	12 Port SC/LCD angled right panel - printed 1, 12	
<b>SCD / LCQ Panels</b>		
FPP-SCD06-FL	6 Port SCD/LCQ flat panel - printed 1, 12 (13, 24 on rear)	
FPP-SCD06-AL	6 Port SCD/LCQ angled left panel - printed 1, 12	
FPP-SCD06-AR	6 Port SCD/LCQ angled right panel - printed 1, 12	
<b>ST / FC Panels</b>		
FPP-ST06-FL	6 Port ST/FC flat panel - printed 1-6 (7-12 on rear)	
FPP-ST12-FL	12 Port ST/FC flat panel - printed 1, 12 (13, 24 on rear)	
FPP-ST06-AL	6 Port ST/FC angled left panel - printed 1, 6	
FPP-ST06-AR	6 Port ST/FC angled right panel - printed 1, 6	
FPP-ST12-AL	12 Port ST/FC angled left panel - printed 1, 12	
FPP-ST12-AR	12 Port ST/FC angled right panel - printed 1, 12	

Active | Passive | Test Equipment | Tooling | Cable | Fibre Management

For further information:  
[www.fibreoptic.com.au](http://www.fibreoptic.com.au)  
 +61 3 9757 3000

## Optional Enclosure Accessories

Part Number	Description	
FIBTRAY200-2	12/24 Fibre Stackable Splice Cassette (shown)	
FIBTRAY200-L	24 Fibre Splice Tray Kit with Lid	
FIBTRAY200-LID	Lid to suit Stackable Splice Cassette	
FOS-1RU-COV	1RU Front Cable Management and Labelling Cover - Hinged Magnetic Latching	
FOS-2RU-COV	2RU Front Cable Management and Labelling Cover - Hinged Magnetic Latching	
FOS-3RU-COV	3RU Front Cable Management and Labelling Cover - Hinged Magnetic Latching	
CONKIT-4x1-1M-A	Conduit Kit - 4 cables into 1 enclosure conduit protection kit, angled entry - 1 metre	
SPLPROT-45-2.5-12	12/100 Pack of 45mm Splice Protectors to suit	
SPLPROT-45-2.5-100	FOS Splice Cassette	
COMP-GLAND-M20/M25	20 / 25 mm Nylon Cable Gland	
<p>FOS also stocks a range of cable termination consumables and accessories including:</p> <ul style="list-style-type: none"> <li>- Through adapters</li> <li>- Pigtails</li> <li>- Splicing and cleaning consumables</li> <li>- Glands and cable management accessories</li> </ul>		

Active | Passive | Test Equipment | Tooling | Cable | Fibre Management

For further information:  
[www.fibreoptic.com.au](http://www.fibreoptic.com.au)  
 +61 3 9757 3000

Page 4 of 4

**FOS**  
 Fibre Optic Systems